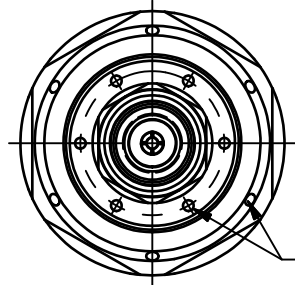


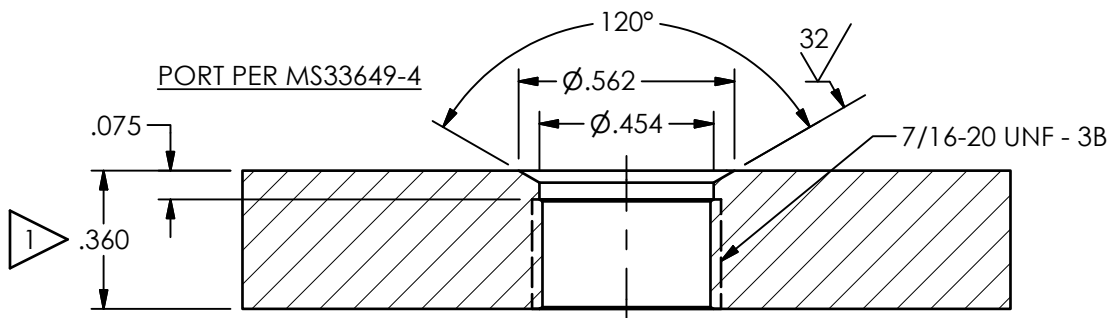
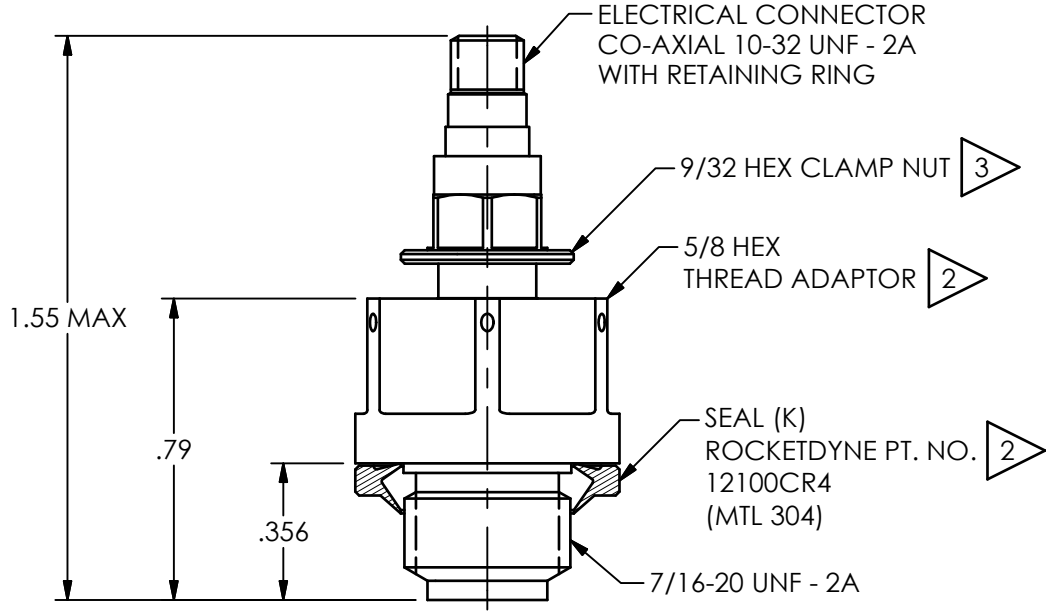
PCB Piezotronics Inc. claims proprietary rights in the information disclosed hereon. Neither it nor any reproduction thereof will be disclosed to others without the written consent of PCB Piezotronics Inc.

REVISIONS		
REV	DESCRIPTION	DIN
NR	RELEASED TO DRAFTING	47140

67826



SAFETY WIRE HOLES



4.) THE ABOVE UNIT IS A SEALED ASSEMBLY AND SHOULD BE RETURNED TO THE FACTORY SHOULD SERVICE BE REQUIRED

3 RECOMMENDED TORQUE ON A 9/32 HEX: 75-85 IN-LBS

2 MOUNTING TORQUE ON A 5/8 HEX: 120-130 IN-LBS

1 DIMENSIONS SHOWN ARE FOR .36 WALL THICKNESS, COUNTERBORE FOR THICKER WALLS

UNLESS OTHERWISE SPECIFIED TOLERANCES ARE:		DRAWN		CHECKED		ENGINEER		 3425 WALDEN AVE. DEPEW, NY 14043 (716) 684-0001 E-MAIL: sales@pcb.com	
DIMENSIONS IN INCHES	DIMENSIONS IN MILLIMETERS [IN BRACKETS]	JDM	9/20/17	JDM	9/20/17	DRK	9/20/17		
DECIMALS XX ±.01 XXX ±.005	DECIMALS X ± 0.3 XX ± 0.13	TITLE INSTALLATION DRAWING CRYOGENIC PRESSURE TRANSDUCER							
ANGLES ± 2 DEGREES	ANGLES ± 2 DEGREES								
FILLETS AND RADII .003 - .005	FILLETS AND RADII 0.07 - 0.13	CODE IDENT. NO. 52681		DWG. NO. 67826		SCALE: 2X		SHEET 1 OF 1	

2

1

1